

Volkswagen R GmbH



Das Auto.

The Golf R





**Benchmark: performance.
The Golf R.**

No journey too far, no task too hard, no bend too tight.
The new Golf R stands for pedigree sports performance and
promises driving pleasure that knows no limits. Are you ready
to take on this challenge?

Torque in Nm: 350*.
Breaths/min: 35.0.



* Maximum torque, Nm at rpm: 350/2500 – 5000.

Information on fuel consumption and CO₂ emissions can be found on page 22.



**Acceleration 0 – 100 km/h: 5.5 s*.
Pupil dilation: 5.5 mm.**

* Information on fuel consumption and CO₂ emissions can be found on page 22.



**Suspension: 25 mm lower.
Pulse: 25 beats higher.**

Equipment and trim

The Golf R is not only a benchmark for sports performance on the outside – the sporty theme continues on the inside too, from dynamic design to the horsepower under the bonnet. Sit back and enjoy what you were already looking forward to when you got in: to experiencing – between first-class materials and athletic contours – how feel-good hormones are released without running a marathon.



The exclusive **sill panel trim with R logo** provide a visual highlight.



The **radiator grille** is a striking hallmark of the Golf R. It displays a clear elegance with its **high-gloss black finish and R logo**, rounding off the car's straight-lined look.



The **exterior mirror housings** have a **high-gloss black finish*** and perfectly complement the body's sporty design. They also make you highly visible in traffic with their **integrated turn signals**.



The **bi-xenon headlight** combines the main beam and dipped beam into one functional unit. A cornering light and headlight range control are also included, which automatically compensates for changes in body tilt. The separate, restyled **daytime running lights** not only look striking, but also ensure that you can be easily seen whatever the weather.



The distinctive **high-gloss black diffuser** emphasises the muscular tail end. The rear motorsport-look bumpers are painted in the body colour.



The **rear spoiler in the body colour** primarily serves to improve the aerodynamics of the Golf R by optimising road traction. But this feature also adds a striking visual touch.



The **black/red LED rear lights** perfectly complement the styling of the Golf R. Strikingly positioned LEDs give emphasis to the rear end's expressive design and lend it an additional dose of self-confidence. The LEDs not only guarantee long-lasting reliability and service life, they also have a particularly high recognition factor.

Standard equipment

Optional equipment

* Exterior mirrors in body colour with paint finish in Deep Black.



The striking, chrome-plated **twin tailpipe** is an unmistakable eye-catcher at the back of the car and produces an impressively full engine sound.



The **widened side sills** on the Golf R are painted in the body colour. They underline its bold formal idiom in impressive style and additionally emphasise the lowered body.



The **“Talladega” package**^{1), 2)} with **19-inch alloy wheels** and bi-xenon headlights in black offers pure energy in R design; the rear window and rear side windows are also tinted. The **“Talladega”**¹⁾ alloy wheel is included in the package in a choice of high-gloss black or sterling silver; it is offered as standard with an 18-inch rim and in sterling silver. One particularly eye-catching detail is the R logo on the black brake callipers.

■ Standard equipment

■ Optional equipment



The combination of petrol direct injection and intelligent supercharging technology enables the **TSI petrol engines**³⁾ to achieve exceptional efficiency. They bring together advantages such as high power output, plenty of torque and low fuel consumption. To achieve this, TSI turbocharger technology is accompanied by the latest measures to reduce engine displacement. Very high levels of efficiency have been achieved thanks to lower friction losses. This downsizing results in small and thus economical engines that generate remarkable output, such as a powerful TSI unit producing 199 kW (270 bhp)³⁾.

1) Our cars are fitted with summer tyres as standard. Since 1 May 2006, drivers in Germany have been obliged by law to ensure that their vehicles are suitably equipped for the weather when driving in wintry conditions. Your Volkswagen dealer will be pleased to advise you on this. 2) Package only available with 19-inch “Talladega” alloy wheel. 3) Information on fuel consumption and CO₂ emissions can be found on page 22.



The confident character of the Golf R continues throughout the interior. **The top sports seats in the front with “Kyalami” cloth upholstery and Artgrey stitching** are especially striking: their outer side sections are in black cloth, the inner side sections in crystal grey microfibre. The seat centre section is in a sporty flat-weave fabric.

It goes without saying that first-class materials and ultra-precise workmanship ensure quality down to the last stitch. Many more attractive and practical extras, such as embroidered R logos on the front head restraints, colour-coordinated floor mats with piping in Art Grey, seat heating and the easy-to-use leather multifunction steering wheel make a drive in the Golf R pure pleasure.

■ Standard equipment

■ Optional equipment



The bucket seats in the front underline the motorsport look of the Golf R. The seat centre section is in “San Remo” microfibre, the insides of the side sections and the head section in fine “Vienna” leather. These ergonomically optimised seats also provide outstanding lateral support.

Bucket seats are not available with the easy-entry function.

Standard equipment

Optional equipment



The head restraints on the front seats with embroidered “R” logos in Art Grey are height-adjustable and optimised for crash safety. They act to reduce the distance between the occupant’s head and the head restraint in the event of an impact. This minimises the risk of spraining the neck muscles.



The aluminium “Silver Lane” inlay forms an elegant eye-catching feature in the interior. Its distinctive design with “R” logo above the glove compartment adds a luxurious touch.



The gear lever knob stands out with its aluminium-look and high-gloss black finish surround. It fits the hand well and forms a visual unit with the hand-brake grip in leather with Art Grey stitching.



The pedals enhance the look of the front footwell thanks to brushed stainless steel pedal caps with a high-grip, anti-slip surface.



The “Keyless Access” locking and starting system stands for maximum comfort. A sophisticated radio and security mechanism make it possible to unlock and lock the vehicle without actively using the key. The engine is started and stopped at the press of a button.



The leather multifunction steering wheel with high-gloss black trim, “R” logo and stitching in Art Grey allows easy operation of the multifunction display “Plus” and the radio. If the optional DSG dual-clutch gearbox is selected, the steering wheel will also be equipped with handy shift paddles that can be used to change gear without taking your hands off the steering wheel.



The adjustable, white-lit instrument cluster with blue needles offers a particularly sporty colour combination. It maintains optimum readability in all lighting conditions. The multifunction indicator “Plus” shows, for example, the average speed and fuel consumption, journey time and auxiliary heater settings. You can also see whether doors have been left open, select your preferred language and make the setting for winter tyres.



4MOTION is a permanent 4-wheel drive system that offers not only reliable traction and enhanced active safety, but also consistently good straight line driving characteristics for maximum directional stability, even in adverse weather conditions and on poor road surfaces.



The **DSG dual-clutch gearbox** changes gear in hundredths of a second and without interrupting the power flow, making sporty acceleration possible. The efficiency of the 6-speed gearbox also helps to save fuel.



The **“RCD 310” radio** with a total of eight loudspeakers is equipped with a CD drive and an AUX-IN multimedia socket. It plays the formats MP3 and WMA and produces an output of 4 x 20 watts.



The large colour display of the **“RCD 510” radio** with touchscreen is really easy to operate. MP3 and WMA files, plus the 6-disc CD changer provide 4 x 20 watts of sound through eight loudspeakers.

Traffic message memory is not available in conjunction with DAB digital radio reception.



The **“RNS 310” radio-navigation system** with CD drive, AUX-IN port and SD card slot has many compelling benefits that make it a modern, fully integrated navigation system. Map navigation is conducted on a colour touchscreen display.



Adaptive chassis control adjusts each shock absorber to the road surface and driving situation independently and in a matter of milliseconds. You decide at the push of a button how firm or comfortable the suspension setup is to be.

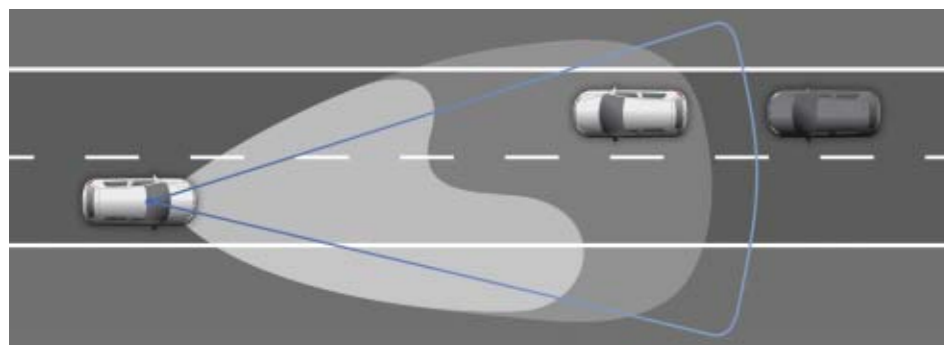


The MP3- and WMA-compatible **“RNS 510” radio-navigation system** with voice control and picture navigation, touchscreen display, DVD drive, 30-gigabyte hard drive, SD memory card slot, AUX-IN multimedia port and multifunction indicator “Plus”.

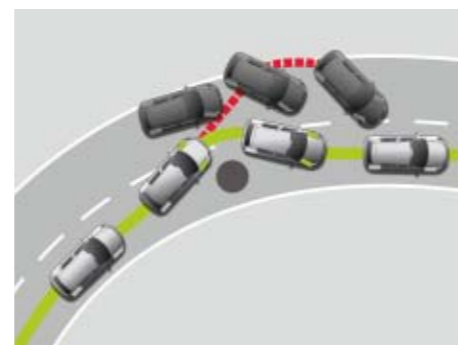


The **“Climatronic” air conditioning system** electronically regulates the temperature and divides the interior into two zones: one for the driver's side and one for the front-passenger side. Temperature, airflow and air distribution can be individually set. This allows both front-seat occupants to enjoy their own individual sense of wellbeing. The set temperature is displayed to an accuracy of one degree on a display. An air quality sensor monitors the quality of the outside air and automatically activates air recirculation if this is necessary.

Temperature display on the “RCD 510” radio, “RNS 310” and “RNS 510” radio-navigation system. Only in conjunction with “Climatronic” air conditioning system. Display on the “RCD 310” differs.



“Light Assist” main beam control detects oncoming traffic and vehicles driving in front with a camera installed behind the windscreen, and then automatically switches between dipped and main beam headlights. This intelligent system not only makes the driver's work easier, but also considerably increases the amount of time the main beam is switched on, thus improving visibility. The result is greater comfort and safety when driving in the dark.



The **electronic stabilisation program¹⁾** is specially configured for the sporty characteristics of the Golf R and prevents the car from swerving out of control in critical situations. This helps the car to achieve maximum directional stability.



The **ParkPilot** detects obstacles in front of and behind the vehicle and warns you when parking by emitting acoustic and visual²⁾ signals. The closer you get to an obstacle, the faster the frequency of the warning tone.

1) The electronic stabilisation program cannot defy the laws of physics. A careful driving style is therefore still essential. 2) Visual display available only in conjunction with an “RCD 310” or “RCD 510” radio or an “RNS 310” or “RNS 510” radio-navigation system.

Paint finishes and seat upholstery

Which colour best suits you is of course ultimately up to you. The wide range of options may make the choice tantalisingly difficult, but it certainly means you can create a truly individual car. Whatever paint finish or seat upholstery you choose, you can be sure of brilliant colours, top material quality and a superlative finish.



Candy White
Solid paint finish
B4



United Grey
Metallic paint finish
X6



Deep Black
Pearl effect paint finish
2T



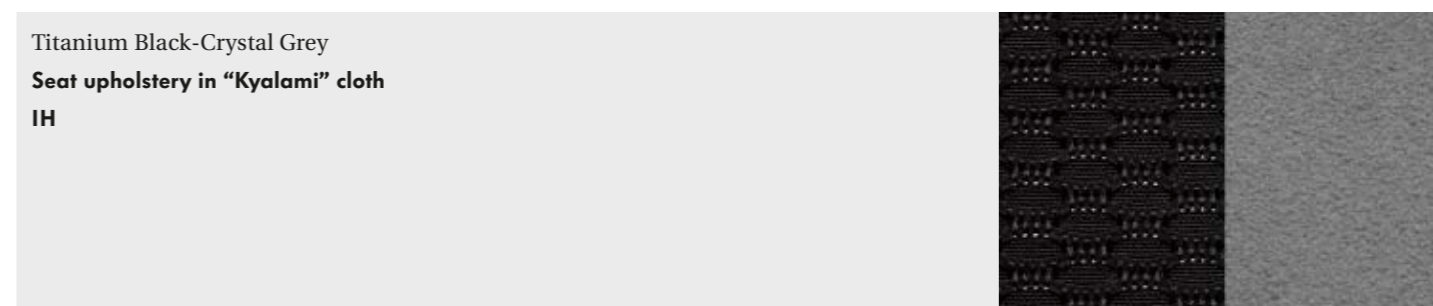
Tornado Red
Solid paint finish
G2



Blue-Graphit
Pearl effect paint finish
W9



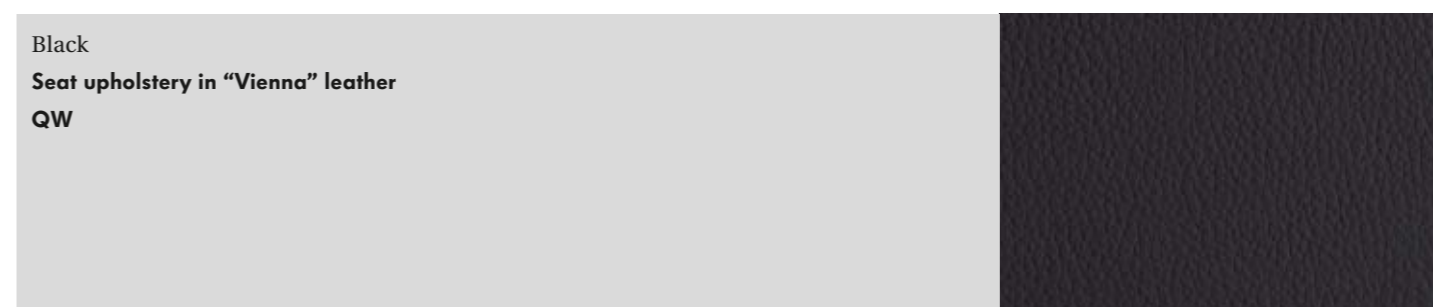
Rising Blue
Metallic paint finish
4C



Titanium Black-Crystal Grey
Seat upholstery in "Kyalami" cloth
IH



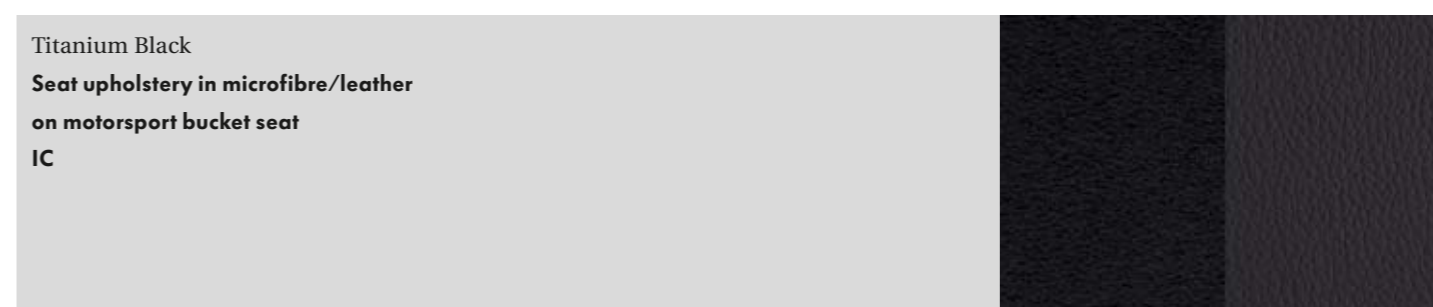
Reflex Silver
Metallic paint finish
8E



Black
Seat upholstery in "Vienna" leather
QW



Shadow Blue
Metallic paint finish
P6



Titanium Black
Seat upholstery in microfibre/leather
on motorsport bucket seat
IC

Standard equipment

Optional equipment

The illustrations on these pages should only be used as a rough guide. The colours shown cannot accurately represent the actual colours of the paints and seat upholstery.

Combinations

← Seat upholstery	← Carpeting	← Instrument panel upper/lower	← Candy White B4	← Tornado Red G2	← Rising Blue, metallic 4C	← Reflex Silver, metallic 8E	← Shadow Blue, metallic P6	← United Grey, metallic X6	← Deep Black, pearl effect 2T	← Blue Graphite, pearl effect W9
“Kyalami” cloth seat upholstery ●										
Titanium Black-Crystal Grey (IH)	Black	Titanium Black/Titanium Black	●	●	○	○	○	○	○	○
Seat upholstery in “Vienna” leather ○										
Black (QW)	Black	Titanium Black/Titanium Black	●	●	○	○	○	○	○	○
Seat upholstery in microfibre/leather on motorsport bucket seat ○										
Titanium Black (IC)	Black	Titanium Black/Titanium Black	●	●	○	○	○	○	○	○

Fuel consumption and CO₂ emissions

		199 kW (270 bhp)
		TSI
Petrol engine		4MOTION
Fuel consumption (l/100 km)¹⁾	with manual gearbox:	6-speed
	Urban	11.8
	Extra-urban	6.7
	Combined	8.5
	with DSG dual-clutch gearbox:	6-speed
	Urban	11.2
	Extra-urban	6.8
	Combined	8.4
CO₂ emissions, combined, g/km¹⁾	with manual gearbox:	199
	with DSG dual-clutch gearbox:	195

The symbols opposite the seat upholstery names indicate which upholstery is fitted as standard (●) and which as an optional extra (○). The table indicates whether a paint finish is available as standard (●) or as an optional extra (○).

1) Fuel consumption and emissions values were calculated according to the measuring methods prescribed in the currently applicable version of Regulation (EC) 715/2007. Note in compliance with Directive 1999/94/EC in its currently valid version: the data does not relate to a specific vehicle and is not part of the specification, but is merely for the purpose of comparing different vehicle types. The fuel consumption and CO₂ emissions of a vehicle do not just depend on the efficient utilisation of the fuel by the vehicle, but are also influenced by driving style and other non-technical factors. CO₂ is the greenhouse gas primarily responsible for global warming. A guide to fuel economy and CO₂ emissions, containing data on all new passenger car models, is available free of charge at all retail outlets in the European Union. Customers in Germany can also obtain the guide from DAT Deutsche Automobil Treuhand GmbH, Hellmuth-Hirth-Straße 1, 73760 Ostfildern.

Some of the vehicles illustrated in this brochure are equipped with optional extras available at extra charge. The Golf R specification is otherwise identical to that of the Golf (see also the main catalogue “The Golf” for details). All details of equipment and technical data are based on the specifications for the German market and are supplied on the basis of the information available at the time of going to print. Your Volkswagen dealer will be pleased to inform you about country-specific variations. Subject to amendment. 4MOTION®, DSG® and TSI® are registered trademarks of Volkswagen AG and of other Volkswagen Group companies in Germany and other countries. The absence of ® from any trademark used in this document does not imply that it is not a registered trademark and/or that this trademark can be used without prior written permission from Volkswagen AG. Volkswagen provides for the take-back and recovery of end-of-life vehicles. All Volkswagens can be recycled in an environmentally friendly manner and can be handed back free of charge provided that the legal requirements are satisfied. You can obtain further information on this from your Volkswagen dealer, on the internet at www.volkswagen.de or, for customers in Germany, by ringing our freephone number: 0800 – VOLKSWAGEN (0800 – 86 55 79 24 36).

Equipment overview

Exterior and wheels	
4 “Talladega” alloy wheels, 7 ½ J x 18, in sterling silver, 225/40 R 18 tyres ²⁾	●
Twin exhaust tailpipe in the centre of bumper/diffuser	●
Exterior mirror housings in black	●
Bi-xenon headlights with cornering lights	●
Black painted brake callipers with R logo	●
Aluminium sill panel trim at front with R logo	●
Rear spoiler in body colour	●
Radiator grille with ribs with high-gloss black finish, with R logo	●
LED daytime running lights in the bumper	●
Air inlet grille and diffuser with high-gloss black finish	●
“Talladega” package ³⁾ with 4 “Talladega” alloy wheels, 8 J x 19, 235/35 R 19 tyres ²⁾ , in a choice of sterling silver or high-gloss black, bi-xenon headlights in black, shaded rear side windows and rear window, 65 % light-absorbing	○
Rear lights with LED technology, black/red	●
Widened sills in body colour	●
Bumpers in motorsport look, painted in body colour	●

Interior	
Aluminium “Silver Lane” inlays with “R” logo for dashboard and door trims	●
Instrument cluster with white illumination and blue needles	●
Front head restraints with embroidered R logo in Artgrey	●
Motorsport bucket seats at front in “Vienna” leather/“San Remo” microfiber, heated	○
Stainless steel pedals	●
Leather gear lever knob with aluminium-look and high-gloss black decor and stitching in Art Grey, leather handbrake lever grip with stitching in Art Grey	●
Seat upholstery in “Vienna” leather, on top sports seats in front, with electric height adjustment	○
Seat upholstery in “Kyalami” design, on top sports seats in front, height-adjustable, storage pockets on the reverse side	●
Fabric floor mats with edging in Art Grey	●

Function	
Adaptive chassis control DCC	○
Anti-theft alarm “Plus”: with electronic immobiliser, interior monitoring, back-up horn and tow-away protection, including individual door opening	●
Electronic stabilisation program (ESP) with driver steering recommendation, incl. ABS with comfort brake assist, ASR and EDL	●
Main beam control “Light Assist”	○
Cruise control system	○
“Climatronic” air conditioning system: with 2-zone temperature control, independently adjustable on left and right sides, cooling for glove compartment, air quality sensor	●
Front centre armrest in leather look with stitching in Art Grey, with storage box, 2 air vents and 2 cup holders at rear	●
Leather multifunction steering wheel (3-spoke) with aluminium-look/high-gloss black finish trim, with stitching in Art Grey and “R” logo	●
ParkPilot: acoustic and visual warning signals for obstacles in front of and behind the car ⁴⁾	●
“RCD 310” radio: MP3 playback function, 4 x 20 watts, 8 speakers, CD drive	●
Tyre monitor display	●
“Keyless Access” locking and starting system	○
Sports suspension, body approx. 25 millimetres lower	●
Winter package with automatically heated windscreen washer jets, heated front seats, headlight washer system, warning light for washer fluid level	●

2) Our cars are fitted with summer tyres as standard. Since 1 May 2006, drivers in Germany have been obliged by law to ensure that their vehicles are suitably equipped for the weather when driving in wintry conditions. Your Volkswagen dealer will be pleased to advise you on this. 3) Package only available with 19-inch “Talladega” alloy wheel.

4) Visual display available only in conjunction with an “RCD 310” or “RCD 510” radio or an “RNS 310” or “RNS 510” radio-navigation system.

● Standard equipment ○ Optional equipment

The Golf R

092.1240.23.18 · Printed in Germany

Subject to amendment

Issue: October 2010

Internet: www.volkswagen-r.de

■

■

Your Volkswagen dealer

■